

# Hockley, Essex, SS5



£195,000



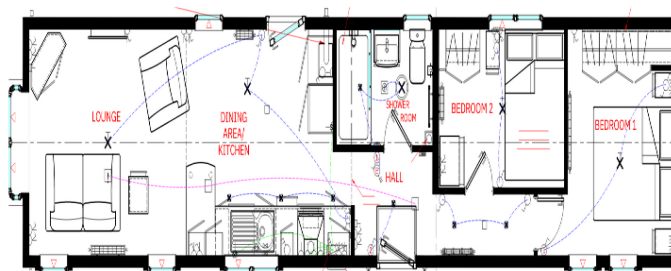
This brand new, modern-furnished Omar Newmarket (50'x10') luxury park home is perfect for those looking for a detached, easy to maintain, bungalow-style property. The home has an open plan kitchen and living area, two double bedrooms and a shower room.

A delightful setting on the banks of the River Crouch makes this park an ideal place if you have a love of sailing and fishing. There are four yacht clubs within a mile of the park and for those who prefer golf, a first class course within easy reach. Easily accessible buses link to Southend and Chelmsford. Southend has seven glorious miles of seafront with water sports, Sea Life Adventure Centre and the longest pleasure pier in the world with a railway. Hullbridge has good shopping facilities including a Library, Post Office and Doctors Surgery.

Age restriction: Over 50's  
Pet friendly: Yes  
Site fees: £311 per month  
Residential licence

### Key Features

- 10-Year Goldshield Warranty
- Brand new home
- Double glazing
- Driveway
- Fully Furnished
- Gas Central Heating
- Part Exchange Available
- Residential, riverside Development
- Two Bedrooms



### House to sell?

Hassle-free Property Part-Exchange is available from Quickmove Properties, with no estate agent fees, no solicitor's fees and no market uncertainty.

### CONTACT US

01793 840917

[advice@quickmoveproperties.co.uk](mailto:advice@quickmoveproperties.co.uk)

**Quickmove**  
PROPERTIES



The Property  
Ombudsman