

# Birtley, Tyne and Wear, DH2



£105,000



This brand new, modern-furnished Omar Westbury (38'x20') luxury park home is perfect for those looking for a detached, easy to maintain, bungalow-style property. The home features a modern, fitted kitchen with integrated appliances and a dining and living area with comfortable furniture and large windows. The home also has two double bedrooms, an en suite and a family bathroom.

The park is surrounded by stunning countryside with views of the Angel of the North, and is within a short distance to the A1, Team Valley Retail Park and Birtley Town Centre. Next to the park is Lamesley Pasture Nature Reserve which is one of the few undeveloped river floodplains in the area and contains designated Local Wildlife Sites.

Age restriction: Over 45s

Pet friendly: Yes

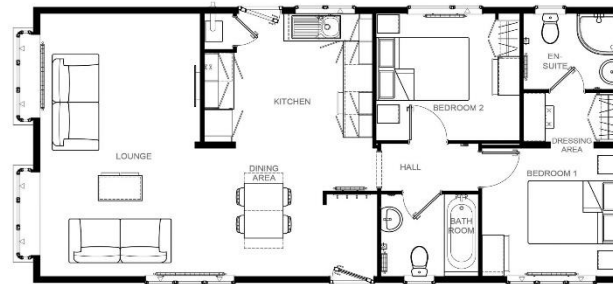
Site fees: Approx £221.13 per month

Residential license

Stock images have been used, the home on-site may vary.

## Key Features

- Brand new home
- Community Living
- Enhanced part exchange for a quick sale
- Fully Furnished
- Modern design
- Over 45s
- Residential Development
- Two Bedrooms
- Exceptionally High Specification



Westbury 40' x 20' 2DB



## House to sell?

Hassle-free Property Part-Exchange is available from Quickmove Properties, with no estate agent fees, no solicitor's fees and no market uncertainty.

## CONTACT US

01793 840917

advice@quickmoveproperties.co.uk

**Quickmove**  
PROPERTIES

