

# Bedford, Bedfordshire, MK43



£215,000



This home is perfect for those looking for a detached, easy to maintain, bungalow style retirement property. This brand new Omar Westbury (36'x20') is a fully furnished and equipped park home with a traditional exterior and interior design. The home traditionally styled with clean lines and simple styling; a perfect canvas to add your own finishing touches and make it your own.

Bromham Village provides most of the day-to-day amenities as well as stunning countryside views. The local area is dotted with points of interest - castles and other historic sites. Bromham has a range of walks and footpaths. The local paths are supported by the village's own Walking Group. Bedford town also has multiple reserves, parks and lakes, off the River Great Ouse.

Age restriction: Over 45's

Pet friendly: Yes

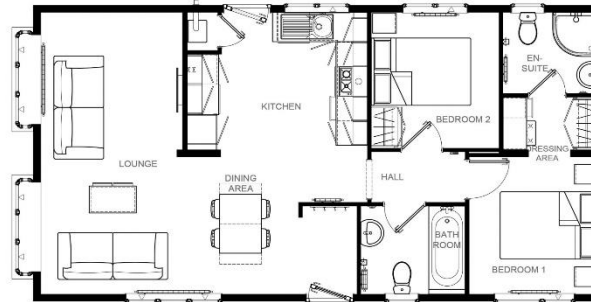
Site fees: £237.15 per month

Residential license

Stock images have been used, the home on site may vary.

### Key Features

- Brand new home
- Community Living
- Exceptionally High Specification
- Fully Furnished
- Modern design
- Over 45s
- Part Exchange for a Quick Sale
- Pet-Friendly
- Residential Development
- Two Bedrooms



Westbury 36' x 20' 2DB



### House to sell?

Hassle-free Property Part-Exchange is available from Quickmove Properties, with no estate agent fees, no solicitor's fees and no market uncertainty.

### CONTACT US

01793 840917

advice@quickmoveproperties.co.uk

