

Winchester, Hampshire, SO22



Price as listed



This brand-new, modern-furnished Prestige Sonnet (40'x20') luxury park home is perfect for those looking for a detached, easy-to-maintain, bungalow-style property. The home has a spacious kitchen with integrated appliances and dining area. There is a comfortable living room, two double bedrooms, an en suite and a bathroom. The landscaped exterior boasts a driveway and garden space.

The park is situated just 3 miles north of the historic city of Winchester in the popular hamlet of Littleton. Within close proximity to the homes are a church, restaurant, bowling, cricket, tennis and croquet clubs, and a football team. There is also a village hall and a post office. The local shops are a 10- minute car drive away.

Age restriction: None

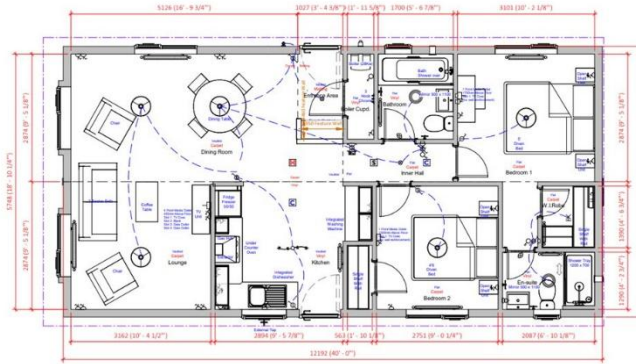
Pet Friendly

Site fees (at time of listing): £250 per month

Residential license

Key Features

- Driveway
- Fully Furnished
- Garden space
- Modern design
- No age restriction
- Part Exchange Available
- Pet-Friendly
- Residential Development
- Two Double Bedrooms



House to sell?

Hassle-free Property Part-Exchange is available from Quickmove Properties, with no estate agent fees, no solicitor's fees and no market uncertainty.

CONTACT US

01793 840917

advice@quickmoveproperties.co.uk

