

# Silloth, Cumbria, CA7



£195,000



This pre-owned modern Omar Middleton (40'x20) park home is perfect for those looking for a detached, easy to maintain, bungalow-style property. The landscaped exterior boasts a garden area overlooking fields, a garage and driveway. The home has a galley-style kitchen with a separate utility room, a dining area and a comfortable lounge with an electric fireplace. There are two double bedrooms, an en suite and a family bathroom.

The park is set in tranquil grounds only 100m from the sea in the coastal town of Silloth-on-Solway, just a short drive from the Lake District, with its picturesque lakes, idyllic villages, and high moorlands. In Silloth you can find all local amenities and 25 miles away is the larger city of Carlisle.

Age restriction: Over 50s

Pet Friendly: Yes

Site fees (at time of listing): £171.38 per month

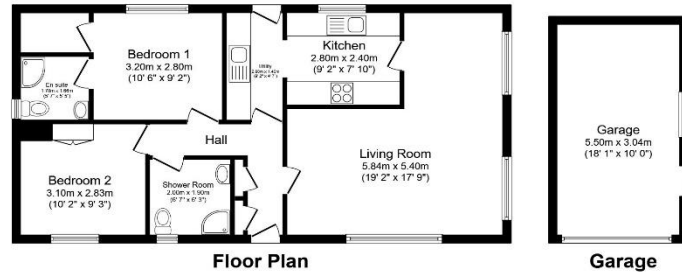
Residential license

### House to sell?

Hassle-free Property Part-Exchange is available from Quickmove Properties, with no estate agent fees, no solicitor's fees and no market uncertainty.

### Key Features

- Community Living
- En suite
- Established Park
- Fully Furnished
- Gated and secure community
- Over 50s
- Part Exchange Available
- Pets welcome
- Pre-owned park home
- Short walk to the coast



Total floor area 86.0 sq.m. (926 sq.ft.) approx

This floor plan is for illustrative purposes only. It is not drawn to scale. Any measurements, floor areas (including any total floor area), openings and orientation are approximate. No details are guaranteed, they cannot be relied upon for any purpose and they do not form part of any agreement. No liability is taken for any error, omission or misstatement. A party must rely upon its own inspection(s). Powered by www.localagent.com



## CONTACT US

01793 840917

advice@quickmoveproperties.co.uk

