

Twigworth, Gloucestershire, GL2



£220,000



This pre-owned, modern Omar Elveden Cottage (44'x20') luxury park home is perfect for those looking for a detached, easy to maintain, bungalow style retirement property. The home has a spacious kitchen and dining area, a comfortable living room with a fireplace, two double bedrooms, an en suite and a bathroom. The home also has a garden with an extended patio and garage.

This home is set in a residential in the peaceful, scenic village of Twigworth. The park is a modern development of beautifully constructed modern park homes which offers a stress-free park living experience in a friendly and safe community. Idyllically situated within the Gloucester suburbs, this park is the perfect place for rest and relaxation. The village of Twigworth is set between Gloucester and Tewkesbury with easy access to Cheltenham and the Cotswolds area of outstanding natural beauty.

Age restriction: Over 50s

Site fees: £238.09 per month

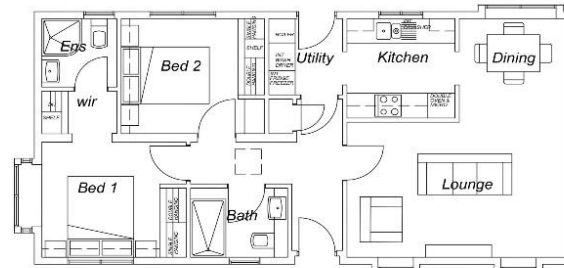
Tenure: 'Virtual Freehold' with Residential license

Council Tax Band A

Pet Friendly

Key Features

- Community Living
- Exceptionally High Specification
- Show home condition
- Garage and Driveway
- Landscaped grounds
- Part Exchange Available
- Pet-Friendly
- Popular Residential Park
- Pre-owned park home
- Two Double Bedrooms



House to sell?

Hassle-free Property Part-Exchange is available from Quickmove Properties, with no estate agent fees, no solicitor's fees and no market uncertainty.

CONTACT US

01793 840917

advice@quickmoveproperties.co.uk

Quickmove
PROPERTIES

