

Windsor, Berkshire, SL4



Price as listed



This brand new, fully-furnished Omar Westbury (36'x20') luxury park home is perfect for those looking for a detached, easy to maintain, bungalow-style retirement property. The home is a fully furnished and equipped park home which boasts of traditional exteriors and a beautiful interior design. The home has a fully fitted kitchen, comfortable living area and two bedrooms.

This superb residential park is a well-established family park ideally located in the Thames Valley, between Ascot, Windsor and Maidenhead and offers a rural retreat that's just a stone's throw from local amenities. The park has no age restriction, and amenities are close by, with a village store at the park entrance and a Tesco a few miles away.

Ideally situated and with easy access to nearby motorway links, you're just a short hop into London. In addition, you're moments away from Windsor Great Park, and there's an array of local leisure attractions and shops all within a short walk. Plus, a convenience store is located on site, and good public transport links make getting out and about very straightforward.

Age restriction: None

Site fees: £245.07 per month

Pet Friendly: Yes

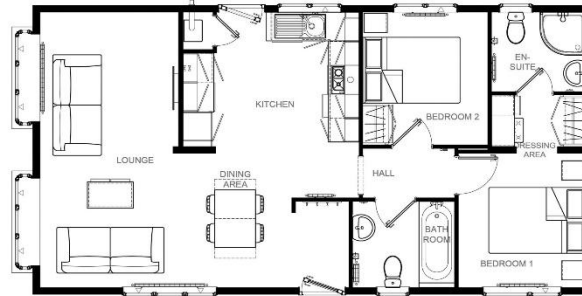
Residential license

House to sell?

Hassle-free Property Part-Exchange is available from Quickmove Properties, with no estate agent fees, no solicitor's fees and no market uncertainty.

Key Features

- Brand new home
- Enhanced part exchange for a quick sale
- Exceptionally High Specification
- Family Park
- Fully Furnished
- Modern design
- Residential Development
- Two Double Bedrooms
- Community living



Westbury 36' x 20' 2DB



CONTACT US

01793 840917

advice@quickmoveproperties.co.uk

