

Ipswich, Suffolk, IP6

Quickmove
PROPERTIES



Offers Over £185,000



This pre-owned Homeseeker (48'x20') park home is perfect for those looking for a detached, easy to maintain, bungalow style retirement property. The home has a spacious kitchen and utility room, dining area and living room with large windows and an electric fireplace. There are two double bedrooms, both with fitted wardrobes, and the master bedroom has an en suite. The family bathroom also has a bathtub.

The park is located in a beautiful setting with picturesque views over open countryside and woodland in the Heart of Suffolk. The park is nestled in an ancient great wood overlooking the historic village of Great Blakenham. Amenities including a pub, doctors, local shop and pharmacy can all be found within a few miles.

Age restriction: Over 45s

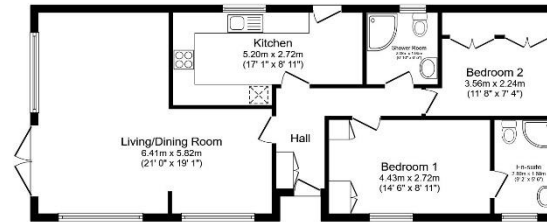
Pet friendly: Yes

Site fees: £258 per month

Residential license

Key Features

- Community Living
- Established Park
- Garden space
- Over 45s
- Pet-Friendly
- Pre-owned park home
- Residential Development
- Two Double Bedrooms
- Village location
- Well maintained home



Total floor area 81.3 m² (876 sq.ft.) approx

This floor plan is for illustrative purposes only. It is not drawn to scale. Any measurements, floor areas (including any total floor area), openings and orientation are approximate. No details are guaranteed, they cannot be relied upon for any purpose and they do not form part of any agreement. No liability is taken for any error, omission or misstatement. A party must rely upon its own inspection(s). Powered by www.localagent.com



House to sell?

Hassle-free Property Part-Exchange is available from Quickmove Properties, with no estate agent fees, no solicitor's fees and no market uncertainty.

CONTACT US

01793 840917

advice@quickmoveproperties.co.uk

Quickmove
PROPERTIES

