

Hatfield, Hertfordshire, AL9

Quickmove
PROPERTIES



Price as listed



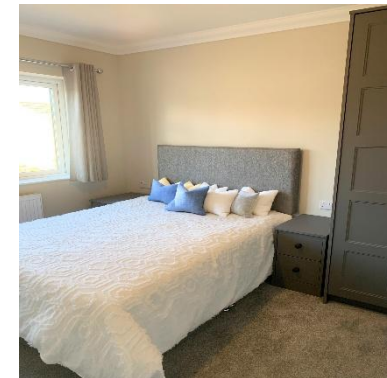
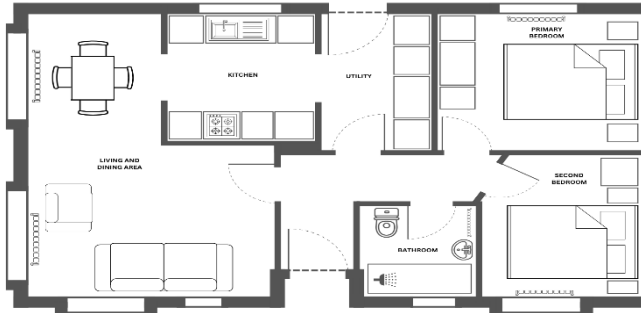
This brand-new, modern-furnished Manor Warkton (32'x20') luxury park home is perfect for those looking for a detached, easy-to-maintain, bungalow-style property. The home features a modern kitchen with integrated appliances, comfortable living room, two double bedrooms and a luxurious shower room.

This residential development is a traditional park in a peaceful rural location, surrounded by fields and villages in beautiful Suffolk countryside. The park has lots of green, open communal spaces, with a pond and water feature to enjoy the peace and quiet! Located in an area of natural beauty, the park is within easy reach of the large town of Ipswich giving access to high street shops and facilities. The popular, stunning village of Hadleigh with its quirky shops, tearoom and restaurants is just 6 miles away. Further afield on the Suffolk/Essex coast lie the seaside ports of Harwich and Felixstowe which can be reached within a 30-mile drive from the park.

Age restriction: Over 25's
 Pet friendly: No
 Site fees: £272 per month
 Stock images have been used

Key Features

- Brand new home
- Exceptionally High Specification
- Fully Furnished
- Modern design
- Over 50s
- Part Exchange Available
- Pet-Friendly
- Two Double Bedrooms



House to sell?

Hassle-free Property Part-Exchange is available from Quickmove Properties, with no estate agent fees, no solicitor's fees and no market uncertainty.

CONTACT US

01793 840917

advice@quickmoveproperties.co.uk

