

# Stafford, Staffordshire, ST16

**Quickmove**  
PROPERTIES



Price as listed



This brand-new, modern-furnished Omar Image (42'x20') luxury park home is perfect for those looking for a detached, easy-to-maintain, bungalow-style property. The home has a modern, spacious kitchen with integrated appliances, dining area and a comfortable living area. There are two double bedrooms, an en suite and a bathroom. The home also has parking to two cars.

Stafford town centre is only 1.5 miles away and has all the usual town amenities, facilities, supermarkets and medical centre. 15 miles away is the city of Wolverhampton. The surrounding area of the park has many countryside walkways, perfect for dog walks and ramblers. There is also a bus stop outside that takes residents to Stafford town centre, Shrewsbury and Wolverhampton.

Age restriction: Over 50s

Site fees (at time of listing): £250 per month

Pet Friendly

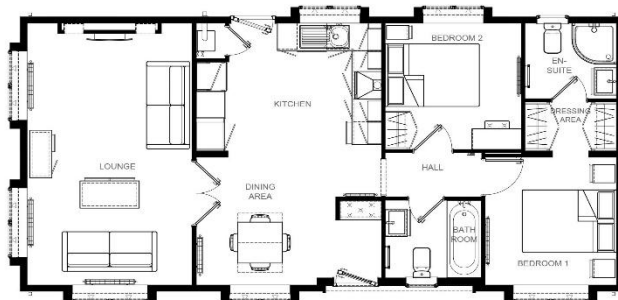
Residential license

### House to sell?

Hassle-free Property Part-Exchange is available from Quickmove Properties, with no estate agent fees, no solicitor's fees and no market uncertainty.

### Key Features

- Brand new home
- Exceptionally High Specification
- Fully Furnished
- Over 50s
- Parking for two cars
- Part Exchange Available
- Pet-Friendly
- Private, Gated Development
- Residential Development



## CONTACT US

01793 840917

advice@quickmoveproperties.co.uk

**Quickmove**  
PROPERTIES



The Property  
Ombudsman