

Chichester, West Sussex, PO20

Quickmove
PROPERTIES



£199,995

 x 2

 x 2

This brand new, modern-furnished Willerby Hazelwood (36'x20') luxury park home is perfect for those looking for a detached, easy to maintain, bungalow-style property. The homes has two double bedrooms, a modern kitchen, a comfortable living room and two bathrooms.

This small, residential development is picturesquely situated in the beautiful countryside. There is a local shop, post office, pub and bus stop at the end of the road. The main shopping area with retail parks is less than half a mile away. This park is located approximately four miles north of Bognor Regis and four miles east of Chichester and ideally positioned to enjoy the beautiful countryside, sandy beaches, fishing and villages.

Age restriction: Over 50s

Pet friendly: Yes

Site fees (at time of listing): £358.96 per month

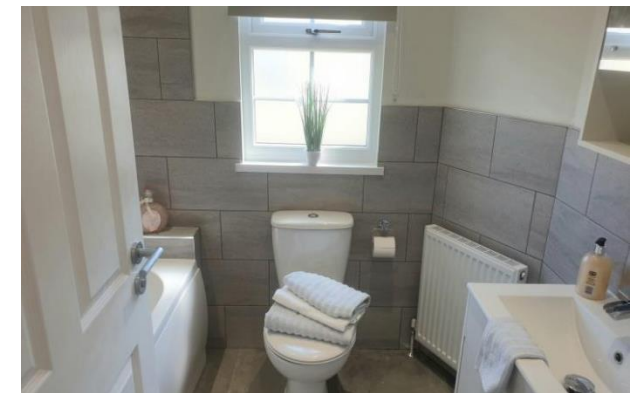
Residential license

House to sell?

Hassle-free Property Part-Exchange is available from Quickmove Properties, with no estate agent fees, no solicitor's fees and no market uncertainty.

Key Features

- Countryside location
- Fully Furnished
- Over 50's
- Part Exchange Available
- Pet friendly
- Pet-friendly
- Residential Development
- Short drive to the coast
- Established development



CONTACT US

01793 840917

advice@quickmoveproperties.co.uk

Quickmove
PROPERTIES

