

# Chertsey, Surrey, KT16



£279,995



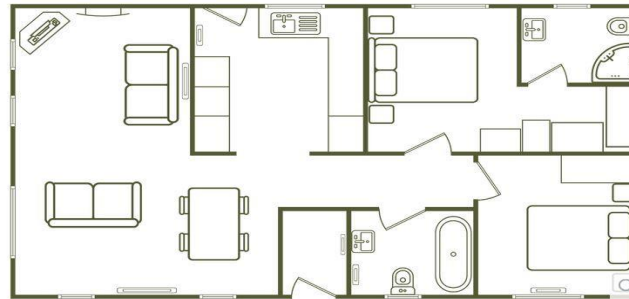
This brand new, fully-furnished luxury park home is perfect for those looking for a detached, easy to maintain, bungalow-style retirement property. This modern home boasts of stylish interiors and a semi-open plan living space. The open-plan design is very trendy with the lounge & dining area forming an 'L' shape & the kitchen opening through to the dining area. The home has two double bedrooms; the master has an en-suite.

With a superb location, set in rural Surrey but close enough to London and to some excellent transport links. This residential park is located off Lyne Lane, in the semi-rural village of Lyne, and the larger centres of both Chertsey and Virginia Water are just less than 3 miles away - there you will find a wide range of retail and service outlets.

Age restriction: Over 50s  
 Pet friendly: Yes  
 Site fees: £292.80 per month  
 Residential license

### Key Features

- Brand new home
- Fully Fitted Kitchen
- Fully Furnished
- Outstanding Location
- Over 50s
- Park Home Bungalow
- Part Exchange Available
- Residential Park



**House to sell?**

Hassle-free Property Part-Exchange is available from Quickmove Properties, with no estate agent fees, no solicitor's fees and no market uncertainty.

### CONTACT US

01793 840917

[advice@quickmoveproperties.co.uk](mailto:advice@quickmoveproperties.co.uk)

