

Hope Valley, Derbyshire, S33



£215,000



This brand new, modern-furnished Omar Image (40'x20') luxury park home is perfect for those looking for a detached, easy to maintain, bungalow-style property. The home has a fitted kitchen with integrated appliances, a comfortable living room, two double bedrooms and two bathrooms.

This development is an excellent base for many great walks and hikes in the Peak District. Local attractions include Derwent Dam, Blue John Caverns and Chatsworth House. Bamford village offers a local 24 hour mini market. Residents will have great rail and bus links to Manchester an hour away and Sheffield just 12 miles away. There is also a bus stop a five minute walk from the development. The Sickleholme Golf Club is across the road from the development.

Site fees (at time of listing): £200 per month

Key Features

- Brand new home
- Cat Friendly
- Fully Furnished
- Over 50s
- Parking space
- Part Exchange Available
- Residential Development
- Two Bedrooms
- Village location
- Walking routes nearby

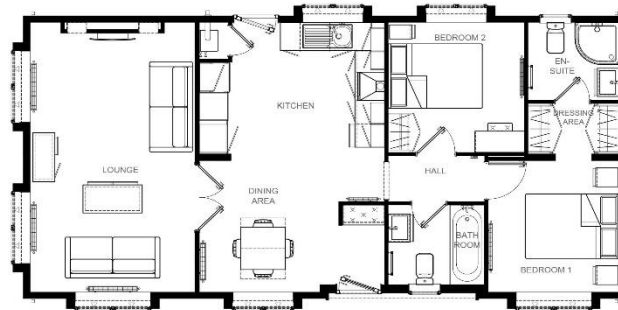
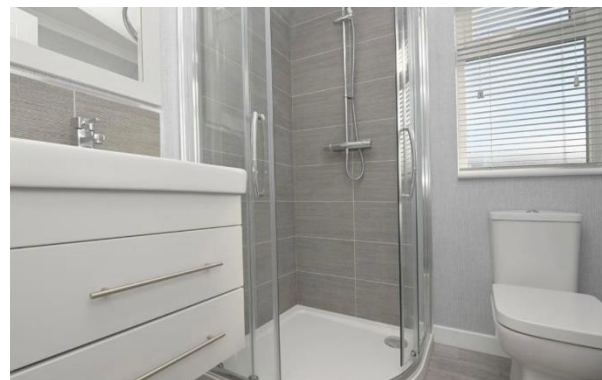


Image 40' x 20' 2DB



House to sell?

Hassle-free Property Part-Exchange is available from Quickmove Properties, with no estate agent fees, no solicitor's fees and no market uncertainty.

CONTACT US

01793 840917

advice@quickmoveproperties.co.uk

