

Stafford, Staffordshire, ST16

Quickmove
PROPERTIES



£255,000



This brand-new, modern-furnished Omar Image (42'x20') luxury park home is perfect for those looking for a detached, easy-to-maintain, bungalow-style property. The home has a modern, spacious kitchen with integrated appliances, dining area and a comfortable living area. There are two double bedrooms, an en suite and a bathroom. The home also has parking to two cars.

The park is located on the outskirts of Doxey Village, which has a local corner shop and farm shop. Stafford town centre is only 1.5 miles away and has all the usual town amenities, facilities, supermarkets and medical centre. 15 miles away is the city of Wolverhampton. The surrounding area of the park has many countryside walkways, perfect for dog walks and ramblers. There is also a bus stop outside that takes residents to Stafford town centre, Shrewsbury and Wolverhampton.

Age restriction: Over 50s

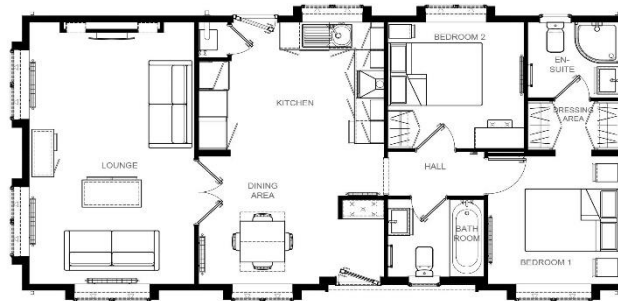
Site fees (at time of listing): £250 per month

Pet Friendly

Residential license

Key Features

- Brand new home
- Exceptionally High Specification
- Fully Furnished
- Over 50s
- Parking for two cars
- Part Exchange Available
- Pet-Friendly
- Private, Gated Development
- Residential Development



House to sell?

Hassle-free Property Part-Exchange is available from Quickmove Properties, with no estate agent fees, no solicitor's fees and no market uncertainty.

CONTACT US

01793 840917

advice@quickmoveproperties.co.uk

