

Vale Of York, Yorkshire, YO8



Price as listed



This brand new, modern-furnished Prestige Avanti (46'x20') luxury park home is perfect for those looking for a detached, easy to maintain, bungalow-style property. This home features a kitchen with integrated appliance, living room with comfortable furniture, two bedrooms and two bedrooms. Each home comes with an 8'x10' shed.

The park features a gated entrance with CCTV, providing a safe environment that is not often found in urban areas. The park is in the process of expanding, with plans for a fishing lake and communal shops scheduled for next year. The 45-acre park is well located in Yorkshire. Right next door to Selby Golf Course, only 4 miles from the historic market town of Selby.

Age restriction: Over 50s

Pet friendly: Yes

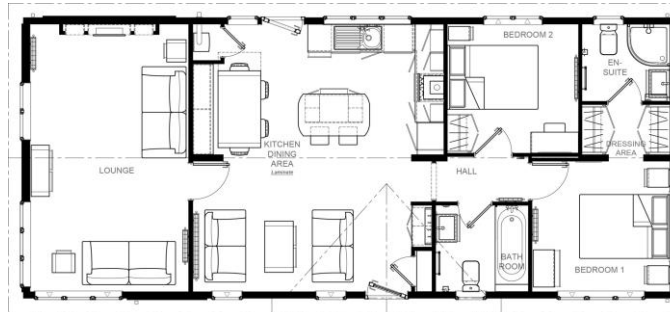
Site fees (at time of listing): £252.73 per month

Residential license

Stock images have been used, the home on site may vary.

Key Features

- Brand new home
- CCTV Security System
- Over 50s
- Part Exchange Available
- Pet-Friendly
- Popular Residential Park
- Private
- Gated Development
- Residential Park Home
- Shops and amenities nearby



CONTACT US

01793 840917

advice@quickmoveproperties.co.uk

