

Canvey Island, Essex, SS8



£315,000



This brand new, modern-furnished Prestige Majestic park home (45'x20') is perfect for those looking for a detached, easy to maintain, bungalow-style retirement property. The home features comfortable open plan living and kitchen areas with large windows, modern furniture, and two double bedrooms.

This popular gated community is located on a 90-acre coastal development, right by the sea. This exciting modern development boasts leisure facilities such as an outdoor swimming pool, lounge and bar, terrace, convenience store and a lively programme of entertainment events and community activities.

Age restriction: Over 50s

Pet friendly: Yes

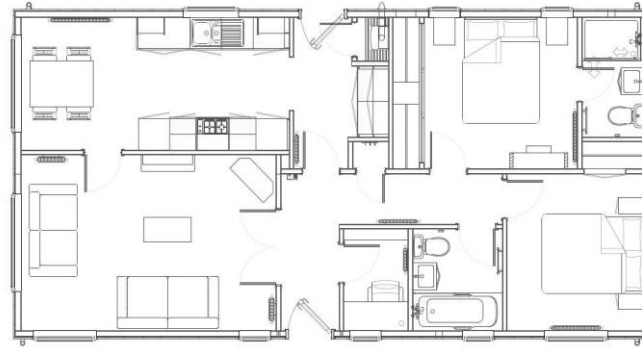
Site fees (at time of listing): £250.37 - £292.09 per month

Residential license

Stock images have been used, the home on site may vary.

Key Features

- Brand new home
- Community Living
- Fully Fitted Kitchen
- Fully Furnished
- Outstanding coastal location
- Over 50s
- Part Exchange Available
- Pet-friendly
- Private Decking



House to sell?

Hassle-free Property Part-Exchange is available from Quickmove Properties, with no estate agent fees, no solicitor's fees and no market uncertainty.

CONTACT US

01793 840917

advice@quickmoveproperties.co.uk

Quickmove
PROPERTIES

