

Hartlepool, County Durham, TS24



£225,000



This brand new, modern-furnished Stately Woburn (44'x20') luxury park home is perfect for those looking for a detached, easy to maintain, bungalow-style property. The home has a modern kitchen with integrated appliances, comfortable living room, two double bedrooms, an en suite and a bathroom.

Located on the North East coast on the outskirts of the thriving town of Hartlepool. It has all major supermarkets, pubs, restaurants, sports and leisure venues. Hartlepool also has the closest medical centre, dentist and pharmacy. The development is on a local bus route giving access to Sunderland and Durham. Durham is the closest city just 14 miles away with all major city amenities and facilities.

Age restriction: Over 45's

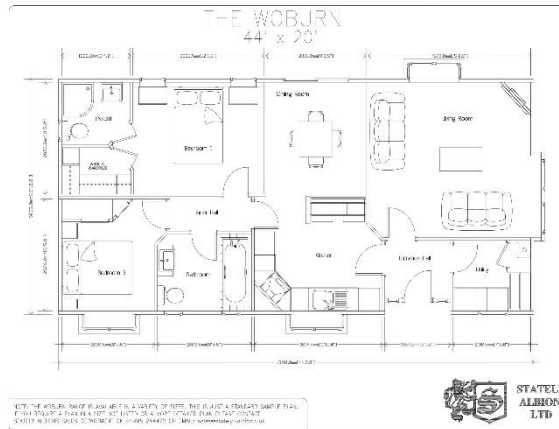
Pet friendly: Yes

Site fees: £195 per month

Stock images have been used, the home on site may vary

Key Features

- Brand new home
- Coastal Location
- Fully Furnished
- Over 45s
- Part Exchange Available
- Pet-Friendly
- Private, Gated Development
- Residential Development
- Town location



House to sell?

Hassle-free Property Part-Exchange is available from Quickmove Properties, with no estate agent fees, no solicitor's fees and no market uncertainty.

CONTACT US

01793 840917

advice@quickmoveproperties.co.uk

