

Swadlincote, Derbyshire, DE12

Quickmove  
PROPERTIES



£220,000

 x 2

 x 2

This brand-new, modern-furnished Tingdene Barnwell (42'x22') luxury park home is perfect for those looking for a detached, easy-to-maintain, bungalow-style property. The home has a modern kitchen with integrated appliances, dining room and a comfortable living room. There are two double rooms, an en suite and a bathroom. Each home also has two parking spaces.

The development is situated on the outskirts of the picturesque village of Moira which has a corner shop and a pub within walking distance from the park. The park and Moira village are found on the edge of the stunning National Forest, where there are many countryside walkways. Ashby De la Zouch is only 3 miles away with a wide choice of supermarkets, restaurants, pubs, and post office. Tamworth and Burton on Trent are nearby, just 13 miles away from the park.

Age restriction: Over 55s

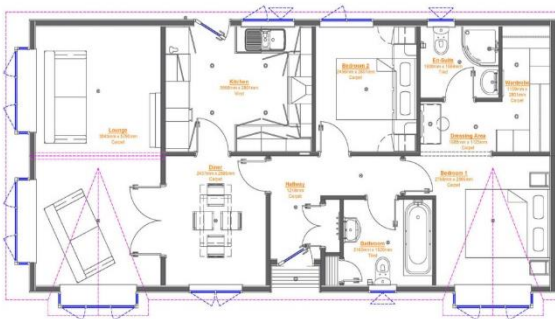
Pet Friendly

Site fees (at time of listing): £180 per month

Residential license

### Key Features

- Brand new home
- Community Living
- Exceptionally High Specification
- Fully Furnished
- Over 55's
- Pet-Friendly
- Private, Gated Development
- Residential Development
- Two Bedrooms



**House to sell?**

Hassle-free Property Part-Exchange is available from Quickmove Properties, with no estate agent fees, no solicitor's fees and no market uncertainty.

## CONTACT US

01793 840917

[advice@quickmoveproperties.co.uk](mailto:advice@quickmoveproperties.co.uk)

