

# Swadlincote, Derbyshire, DE12



£149,995





This brand-new, modern-furnished Willerby Haywood (40'x20') luxury lodge is perfect for those looking for a detached, easy-to-maintain, bungalow-style leisure property. The lodges have an open plan kitchen with integrated appliances, living area with patio doors and an electric fireplace, and a dining area, two bedrooms, an en suite and a bathroom. Each home also has a parking space, with extra parking available for visitors. Each of the nine lodges available will be overlooking a man-made lake with decking.

Located between Overseal and Swadlincote, the leisure development is well located for enjoying a countryside location while being within easy reach of village and town amenities. The village of Overseal has pubs, Co-op, Spar and a post office, it also has its own medical centre. The town of Swadlincote is just 2 miles away, with all large town facilities and amenities. Derby is the closest city 15 miles away. The park is situated close to the M42 affording easy access North and South of the UK.

Age restrictions: None

Site fees (at time of listing): £2,750 per year

Pet friendly: Yes

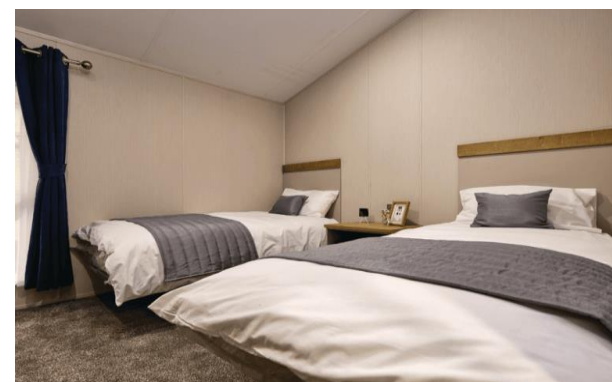
Leisure licence

### House to sell?

Hassle-free Property Part-Exchange is available from Quickmove Properties, with no estate agent fees, no solicitor's fees and no market uncertainty.

### Key Features

- 12 Month Leisure Licence
- Brand new lodges
- Exceptionally High Specification
- Fully Furnished
- Modern design
- No age restriction
- Parking space
- Pet-Friendly
- Private, Gated Development



## CONTACT US

01793 840917

[advice@quickmoveproperties.co.uk](mailto:advice@quickmoveproperties.co.uk)

**Quickmove**  
PROPERTIES

