

Poole, Dorset, BH16



Price as listed



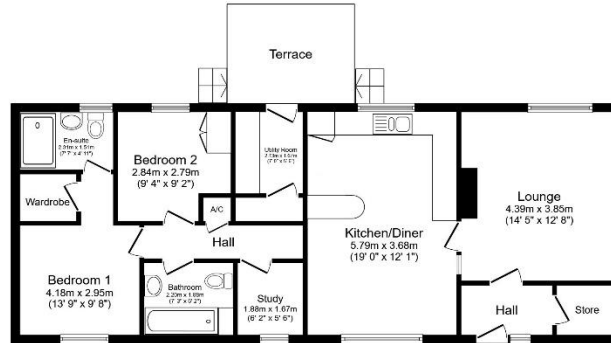
This pre owned, modern Wessex Canford (50'x20') park home is perfect for those looking for a detached, easy to maintain, bungalow style retirement property. The home is in excellent condition, it features a modern kitchen and lounge/diner area. It has two double bedrooms and the master bedroom has an en-suite shower room. The home has a garden with a raised patio and shed and a driveway for 2 cars.

This home is located on a private, gated development in Beacon Hill close to Poole Harbour, Dorset. Set is set within a beautiful, landscaped, forest setting with elevated views of the surrounding countryside. There is a coffee lounge on site and residents have fishing rights to the lakes on the park.

Age restriction: Over 45's
 Pet friendly: Yes
 Site fees: £289.98 per month
 Residential license

Key Features

- Integrated Appliances
- Over 45s
- Part Exchange Available
- Pets welcome
- Pre-owned park home
- Private, Gated Development
- Residential Development
- Residents' Coffee Lounge
- Two bedrooms



Total floor area 85.1 sq.m. (916 sq.ft.) approx
This floor plan is for illustrative purposes only. It is not drawn to scale. Any measurements, floor areas (including any total floor area), openings and orientation are approximate. No details are guaranteed. They cannot be relied upon for any purpose and they do not form part of any agreement. No liability is taken for any error, omission or misstatement. A party must rely upon its own inspection(s). Powered by www.bidsagent.com



CONTACT US

01793 840917

advice@quickmoveproperties.co.uk

