

Saltash, Cornwall, PL12



Price as listed



This pre-owned Pemberton Lyndale park home (45'x20') is perfect for those looking for a detached, easy to maintain, bungalow-style property. The home interior features a spacious, well-appointed kitchen and utility, dining and living area, study, two double bedrooms, a family bathroom and a luxurious en suite. The exterior includes a decking overlooking the park and a driveway.

Set in glorious Cornish countryside near Saltash, this development has everything you'll need right on the doorstep. Located at the village of Landrake, just 10 minutes from the market town of Saltash, it's the ideal location for exploring the Cornish coastline.

Age restriction: Over 45s

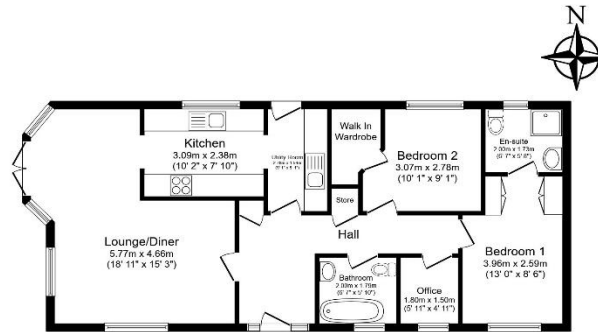
Pet friendly: Yes

Site fees: £240.33 per month

Residential license

Key Features

- Decking
- Over 45s
- Part Exchange Available
- Pet-Friendly
- Popular Residential Park
- Pre-owned park home
- Private, Gated Development
- Study
- Two Double Bedrooms



Total floor area 77.0 m² (839 sq. ft.) approx

This floor plan is for illustrative purposes only. It is not drawn to scale. Any measurements, floor areas (including any total floor area), openings and orientation are approximate. No details are guaranteed, they cannot be relied upon for any purpose and they do not form part of any agreement. No liability is taken for any error, omission or misstatement. A party must rely upon its own inspection(s). Powered by www.kisimaps.com



House to sell?

Hassle-free Property Part-Exchange is available from Quickmove Properties, with no estate agent fees, no solicitor's fees and no market uncertainty.

CONTACT US

01793 840917

advice@quickmoveproperties.co.uk

Quickmove
PROPERTIES



The Property
Ombudsman