

Luxulyan, Cornwall, PL30



Price as listed



This pre-owned, modern park home is perfect for those looking for a detached, easy-to-maintain, bungalow-style property. The home has a modern kitchen with integrated appliances, a dining and living area, two double bedrooms and two shower rooms. The home has a private garden and a parking space.

The homes at this development are located in 10.5 acres of landscaped grounds, with wooded areas, open areas and lovely countryside views. This development is ideally situated in central Cornwall. Set in the countryside, yet only 3 miles from large sandy beaches, and only 6.5 miles from the main route into Cornwall, with the Eden Project just down the road.

Age restriction: Over 55s

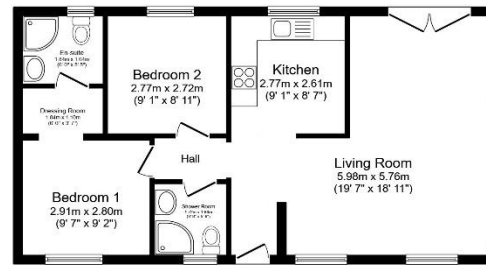
Pet friendly: Yes

Site fees: £226 per month

Residential license

Key Features

- Garden space
- Over 55's
- Pet-Friendly
- Pre-owned park home
- Residential license
- Two double bedrooms
- Modern home
- Parking
- Short drive to coast
- Part exchange available



Total floor area 61.9 m² (666 sq.ft.) approx

This floor plan is for illustrative purposes only. It is not drawn to scale. Any measurements, floor areas (including any total floor area), openings and orientation are approximate. No details are guaranteed, they cannot be relied upon for any purpose and they do not form part of any agreement. No liability is taken for any error, omission or misstatement. A party must rely upon its own inspection(s). Powered by www.b2i.co.uk



House to sell?

Hassle-free Property Part-Exchange is available from Quickmove Properties, with no estate agent fees, no solicitor's fees and no market uncertainty.

CONTACT US

01793 840917

advice@quickmoveproperties.co.uk

