

# Blairgowerie, Perthshire, PH10



Price as listed



This pre-owned luxury park home is perfect for those looking for a detached, easy-to-maintain, bungalow-style property. This wonderful home has a spacious decking overlooking the park towards the lake. The home has a modern, galley-style kitchen, utility room, dining area and a living room with double doors leading to the decking. There are three bedrooms, an en suite to the master and a family bathroom.

This small residential development is exclusive for the over 50s and is situated on the banks of Marlee Loch and offers a stream and wooded area teeming with wildlife, providing an idyllic setting for your new home. The park is located in Kinloch, approximately 1.8 miles from Blairgowrie. Blairgowrie bus route has a bus stop directly outside the park gates. Blairgowrie offers a whole host of local amenities including doctors, dentists, vets and supermarkets.

Age restriction: Over 50s

Pet friendly: Yes

Site fees (at time of listing): £189.99 per month

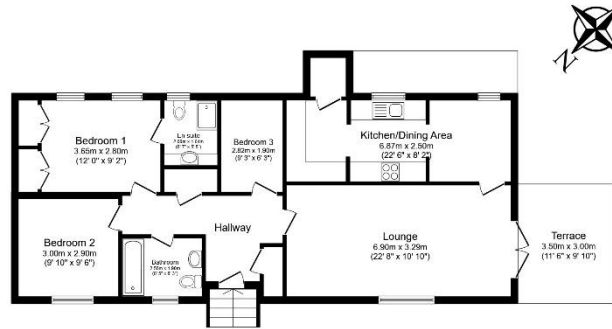
Residential license

### House to sell?

Hassle-free Property Part-Exchange is available from Quickmove Properties, with no estate agent fees, no solicitor's fees and no market uncertainty.

### Key Features

- Community Living
- Decking
- Over 50s
- Part Exchange Available
- Pet-Friendly
- Pre-owned park home
- Residential Development
- Rural Location
- Situated on a Loch
- Town facilities nearby



Total floor area 102.6 m<sup>2</sup> (1,104 sq.ft.) approx

This floor plan is for illustrative purposes only. It is not drawn to scale. Any measurements, floor areas (including any total floor area), openings and orientation are approximate. No details are guaranteed. They cannot be relied upon for any purpose and they do not form part of any agreement. No liability is taken for any error, omission or misstatement. A party must rely upon its own inspection(s). Powered by www.localagent.com



## CONTACT US

01793 840917

advice@quickmoveproperties.co.uk

**Quickmove**  
PROPERTIES

