

# Almondsbury, Bristol, BS32



Price as listed



This brand new, modern Harbur (38'x20') park home is perfect for those looking for a detached, easy to maintain, bungalow-style retirement property. The homes has a modern kitchen with integrated appliances, comfortable living room with a fireplace, two double bedroom an en suite and a bathroom. The home has a garden space with shed and car bay.

This well-established park has a lovely place for entertaining and socializing, which is run by the residents for residents. This space is opens daily for bingo, coffee mornings, line dancing. Just a short drive from this park is Cribbs Causeway, the major shopping area which boasts all the major retail outlets plus a large entertainment complex the whole of which is within a short car/bus ride.

Age restriction: Over 50's

Pet friendly: No

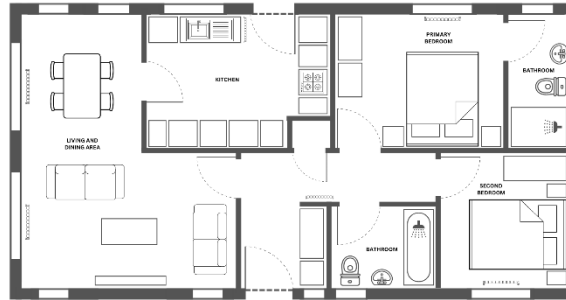
Site fees: £224 per month

Residential license

Stock images have been used, the home on site may vary.

## Key Features

- Brand new home
- Community Living
- Established Park
- Fully Fitted Kitchen
- Luxury 2 Bed Park Bungalow
- Outstanding Location
- Over 50s
- Parking space
- Part Exchange Available
- Residential Park



## House to sell?

Hassle-free Property Part-Exchange is available from Quickmove Properties, with no estate agent fees, no solicitor's fees and no market uncertainty.

## CONTACT US

01793 840917

advice@quickmoveproperties.co.uk

**Quickmove**  
PROPERTIES

