

Ferndown, Dorset, BH22



Price as listed



This brand-new Manor Warkton (40'x20') luxury park home is perfect for those looking for a detached, bungalow-style property. The home features a fully fitted kitchen, a comfortable living area, two bedrooms and two bathrooms.

With all its modern amenities this is a select established park approximately 1 mile from Ferndown. Exclusive for the over 50s, conveniently located to local amenities, with a bus stop nearby. A short drive away from the unrivalled timeless beauty of the New Forest with its quaint villages and famous ponies. Ferndown is just a mile away where there are local shops, doctors, dentists and a library, etc.

Age restriction: Over 50s

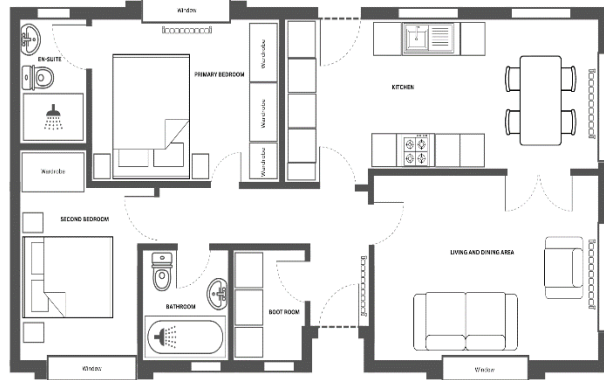
Pet friendly: No

Site fees: £266 per month

Residential license

Key Features

- Brand new home
- Exceptionally High Specification
- Over 50s
- Part Exchange Available
- Residential Park
- Retirement Property
- Shops and amenities nearby
- Two Bedrooms
- Fully furnished
- Two bedrooms



House to sell?

Hassle-free Property Part-Exchange is available from Quickmove Properties, with no estate agent fees, no solicitor's fees and no market uncertainty.

CONTACT US

01793 840917

advice@quickmoveproperties.co.uk

Quickmove
PROPERTIES

