

Weston-Super-Mare, Somerset, BS24



Price as listed



This brand new, modern-furnished Pathfinder Hawthorne (40'x20') luxury park home is perfect for those looking for a detached, easy to maintain, bungalow-style property. The home features a fully fitted kitchen with integrated appliances, comfortable living area, two double bedrooms, an en suite and a bathroom. The landscaped exterior boasts parking and decking.

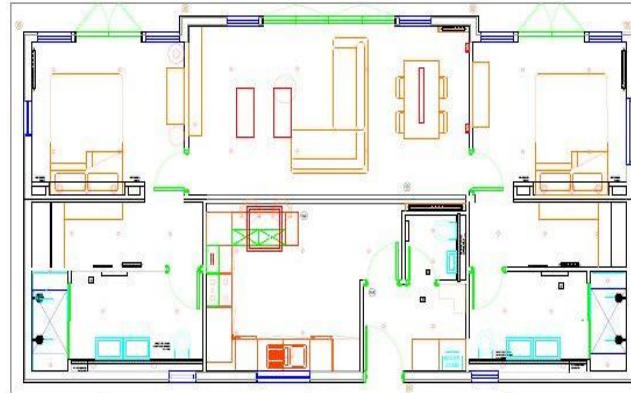
This 12-month leisure development has 10 lodges available for immediate occupation. This brand-new gated park is situated in the heart of Somerset in 28 acres of land. There is no age restriction here and pets are welcome. Residents also have access to a tennis court, and the spa facilities at an extra cost.

The homes are ideally situated close to the beautiful Brean Sands, Burnham on Sea, Weston Super Mare, Mendips Glastonbury, Cheddar and more - the ideal spot to explore all that Somerset and the South West has to offer. Easy accessibility from M5, Bristol Airport and Weston Super Mare Railway. With the coast just a short drive from the park, residents can also enjoy the wonderful coastline and stunning beaches.

Age restriction: None
 Pet friendly: Yes
 Site fees: £330 per month
 12-month leisure license

Key Features

- 12 Month Leisure Licence
- Brand new home
- Countryside location
- Fully Furnished
- House buying service
- No age restriction
- Open-Plan Living
- Pet-Friendly
- Private Development



CONTACT US

01793 840917

advice@quickmoveproperties.co.uk

