

# Amesbury, Wiltshire, SP4

**Quickmove**  
PROPERTIES



Price as listed



This brand new, modern-furnished Stately Tredegar luxury park home makes the most of its spacious layout with a comfortable and modern living area. The home features two bedroom, the master bedroom features plenty of storage and modern, comfortable furniture. The landscaped exterior boasts a garden area and parking space

With 128 park homes neatly arranged within a well managed and maintained site, this semi-retirement park home estate has the benefit of 24-hour CCTV security system providing additional peace of mind. This park is the perfect retirement/semi-retirement estate having all amenities close to hand and beautiful countryside on your doorstep.

Amesbury lies in the heart of the Salisbury Plains and is mostly famous for Stonehenge which is located just a short drive away. The A303 is easily accessible and provides a convenient link to the South West and M3 motorway. The park is ideally located near shops, a local Lidl and the town centre.

Age restriction: Over 50's

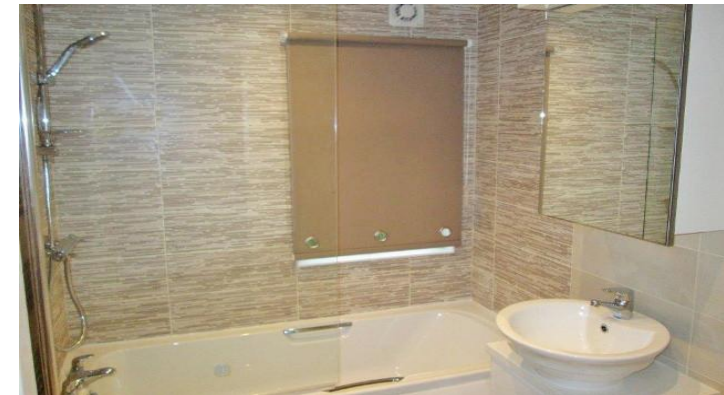
Pet friendly: Yes

Site fees: £39.80 per week

Stock images have been used, the home on site may vary

## Key Features

- 10-Year Goldshield Warranty
- CCTV Security System
- Family-Owned Park
- Fully Furnished
- Over 50s
- Part Exchange Available
- Rural Location
- Parking space
- 2 bedrooms
- Luxury 2 Bed Park Bungalow



## House to sell?

Hassle-free Property Part-Exchange is available from Quickmove Properties, with no estate agent fees, no solicitor's fees and no market uncertainty.

## CONTACT US

01793 840917

[advice@quickmoveproperties.co.uk](mailto:advice@quickmoveproperties.co.uk)

**Quickmove**  
PROPERTIES

