

Vale Of York, Yorkshire, YO8



Price as listed



This brand new, modern-furnished Prestige Sofia (44'x20') luxury park home is perfect for those looking for a detached, easy to maintain, bungalow-style property. This home features comfortable furniture and a modern kitchen with integrated appliances. Each home comes with an 8'x10' shed.

The park features a gated entrance with CCTV, providing a safe environment that is not often found in urban areas. The park is in the process of expanding, with plans for a fishing lake and communal shops scheduled for next year. The 45-acre park is well located in Yorkshire. Right next door to Selby Golf Course, only 4 miles from the historic market town of Selby.

Age restriction: Over 50s

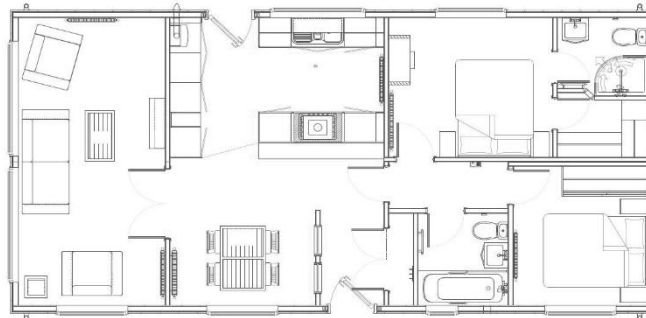
Pet friendly: Yes

Site fees (at time of listing): £252.73 per month

Residential license

Key Features

- Brand new home
- CCTV Security System
- Over 50s
- Part Exchange Available
- Pet-Friendly
- Popular Residential Park
- Private, Gated Development
- Residential Park Home
- Shops and amenities nearby



House to sell?

Hassle-free Property Part-Exchange is available from Quickmove Properties, with no estate agent fees, no solicitor's fees and no market uncertainty.

CONTACT US

01793 840917

advice@quickmoveproperties.co.uk

Quickmove
PROPERTIES

