

# Nottingham, Nottinghamshire, NG2



Price as listed



This brand-new, modern-furnished Stately Tredegar (38'x20') luxury park home is perfect for those looking for a detached, easy-to-maintain, bungalow-style property. The home has a modern kitchen with integrated appliances, comfortable living room, two bedrooms and two bathrooms.

This residential development is surrounded by fields and farms, yet in easy reach of Nottingham. The park is in walking distance to Holme Pierrepont Country Park which is home of the National Water Sports Centre and set in 270 acres of parkland with trails for walking and cycling. West Bridgford is the nearest town and is only one mile away, where you can find shops including M&S foodhall, Asda, Boots, Iceland, banks, a post office and a medical centre. Located on the outskirts of Nottingham, the park is just 10 minutes away from the cities facilities and attractions.

Age restriction: Over 25's

Pet friendly: No

Site fees: £61.48 per week

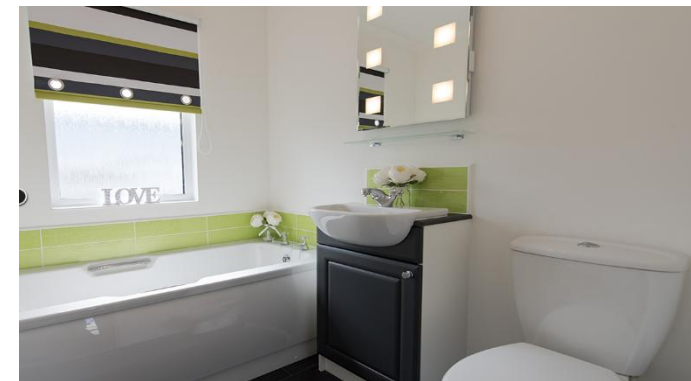
Internal stock images have been used, the home when sited may vary

### House to sell?

Hassle-free Property Part-Exchange is available from Quickmove Properties, with no estate agent fees, no solicitor's fees and no market uncertainty.

### Key Features

- Brand new home
- Community Living
- Fully Furnished
- Integrated Appliances
- Modern design
- No pets
- Over 25s
- Part Exchange Available
- Residential Development
- Town facilities nearby



## CONTACT US

01793 840917

[advice@quickmoveproperties.co.uk](mailto:advice@quickmoveproperties.co.uk)

**Quickmove**  
PROPERTIES

