

Northwich, Cheshire, CW8

Quickmove
PROPERTIES



Price as listed

 x 2

 x 1

This brand new, modern-furnished Victory Stonewood (39'x12') luxury lodge is perfect for those looking for a detached, easy to maintain, bungalow-style holiday property. The lodge is built to a high specification, with an open plan kitchen and living area, and two bedrooms.

This wonderful 12-month leisure development is set deep in the gorgeous Cheshire countryside. The development is located just 4 miles from the town of Nantwich. Nantwich is a thriving tourist town with all your amenities, including supermarkets and shops. There is a bus stop outside the park, which can take residents to Chester, Northwich and beyond. The closest city is Chester, 12 miles away, a thriving city with many big city amenities and facilities.

Age restriction: None

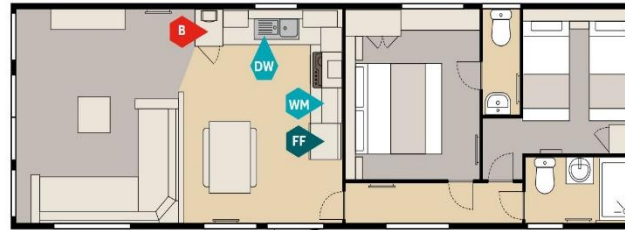
Pet friendly: Yes

Site fees: £3,900 per year

Stock images have been used, the home on site may vary

Key Features

- 12 Month Leisure Licence
- Brand new lodges
- CCTV on park
- Countryside location
- Family Park
- Fully Furnished
- House buying service
- On site warden
- Parking space
- Pet-Friendly



FF Fridge Freezer MW Microwave Space DW Dishwasher Space WM Washing Machine Space B Boiler

39X12 2 BED



House to sell?

Hassle-free Property Part-Exchange is available from Quickmove Properties, with no estate agent fees, no solicitor's fees and no market uncertainty.

CONTACT US

01793 840917

advice@quickmoveproperties.co.uk

