

Portbury, Bristol, BS20



Price as listed



This pre-owned Wessex (34'x20') park home is perfect for those looking for a detached, easy-to-maintain, bungalow-style property. The home is vacant and unfurnished. It consists of a kitchen, living and dining room, two bedrooms and a bathroom with a tub and shower head. The home has a garden space and a garage and driveway.

The development is located in the hamlet of Sheepway in North Somerset, but has easy access to the local towns of Portbury, Portishead, Cribbs Causeway and Bristol City Centre by the local bus services. The M5 and A369 are close to the park to explore the surrounding area and easy access to cross over into South Wales. The coastal resort of Weston-Super-Mare is only 30 minutes drive away.

Age restriction: Over 50s

Pet friendly: No

Site fees: £210.64 per month

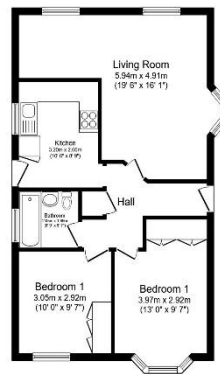
Residential license

House to sell?

Hassle-free Property Part-Exchange is available from Quickmove Properties, with no estate agent fees, no solicitor's fees and no market uncertainty.

Key Features

- Driveway
- Garage
- Garden space
- Over 50s
- Part Exchange Available
- Pre-owned park home
- Residential Development
- Shops and amenities nearby
- Two Bedrooms
- Well maintained home



Total floor area 60.9 m² (656 sq.ft.) approx

This floor plan is for illustrative purposes only. It is not drawn to scale. Any measurements, floor areas (including any total floor area), openings and orientation are approximate. No details are guaranteed, they cannot be relied upon for any purpose and they do not form part of any agreement. No liability is taken for any error, omission or misstatement. A party must rely upon its own inspections. Powered by www.foxtagent.com



CONTACT US

01793 840917

advice@quickmoveproperties.co.uk

Quickmove
PROPERTIES



The Property
Ombudsman