

Chard, Somerset, TA20



Price as listed



This pre-owned Atlas (40'x20') park home is perfect for those looking for a detached, easy-to-maintain, bungalow-style property. The home has a large kitchen with integrated appliances, a breakfast bar and a dining area. A living room with a vaulted ceiling, skylights and doors leading onto the decking. There is a study with fitted cabinets and a desk. The master bedroom has a walk-in wardrobe and an en suite. There are two further bedrooms and a bathroom. The exterior boasts a decking and a large, private garden. There are also two parking spaces.

This residential development is located in the Devon countryside, in the Blackdown Hills Area of Outstanding Natural Beauty, 12 miles south of Taunton. The nearest town is Chard 3 miles away where you can find your nearest amenities including shops, supermarkets and a hospital. The closest city is Exeter. 27 miles away which is rich in history and high street shopping.

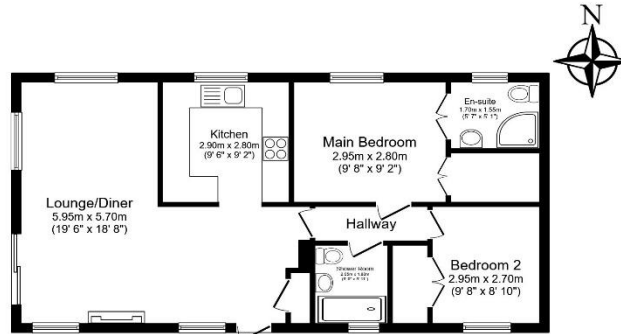
Age restriction: Over 50s
 Pet friendly: Yes
 Site fees (at time of listing): £233.13 per month
 Residential license

House to sell?

Hassle-free Property Part-Exchange is available from Quickmove Properties, with no estate agent fees, no solicitor's fees and no market uncertainty.

Key Features

- Decking
- Garden space
- Modern design
- Over 50s
- Parking space
- Pet-Friendly
- Residential Park Home
- Study
- Two Double Bedrooms
- Vacant plot



Floor Plan

Total floor area 80.5 m² (866 sq.ft.) approx
This floor plan is for illustrative purposes only. It is not drawn to scale. Any measurements, floor areas (including any total floor area), openings and orientation are approximate. No details are guaranteed, they cannot be relied upon for any purpose and they do not form part of any agreement. No liability is taken for any error, omission or misstatement. A party must rely upon its own inspectors. Powered by www.localagent.com



CONTACT US

01793 840917

advice@quickmoveproperties.co.uk

