

Herne Bay, Kent, CT6



Price as listed



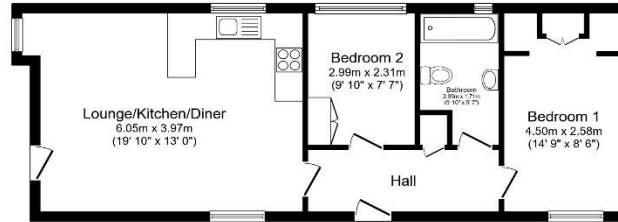
This pre-owned, modern, luxury Hayden Classic (45'x14') park home is perfect for those looking for a detached, easy-to-maintain, bungalow-style property. The home is offered unfurnished and is vacant. The home has a modern kitchen with an integrated oven, hob and fridge/freezer. The living area enjoys large windows and an electric fireplace. There are two bedrooms with fitted wardrobes, and a bathroom with a tub and showerhead. The exterior features a driveway and garden space with a shed.

This development offers a wonderful coastal location, and residents have access to various facilities including an indoor swimming pool, a coffee lounge and tea gardens. Many beautiful coastal walks lead directly from the development and numerous other pursuits nearby such as fishing, horse riding, cycling, sailing and golf.

Age restriction: Over 45's
 Pet friendly: Yes
 Site fees: £270.53 per month
 Residential license

Key Features

- Garden space
- Leisure facilities onsite
- Outstanding coastal location
- Part Exchange Available
- Pets welcome
- Popular Residential Park
- Pre-owned park home
- Private, Gated Development
- Two Bedrooms



Total floor area 56.9 m² (612 sq.ft.) approx

This floor plan is for illustrative purposes only. It is not drawn to scale. Any measurements, floor areas (including any total floor area), openings and orientation are approximate. No details are guaranteed. They cannot be relied upon for any purpose and they do not form part of any agreement. No liability is taken for any error, omission or misstatement. A party must rely upon its own inspection(s). Powered by www.flooragent.com



CONTACT US

01793 840917

advice@quickmoveproperties.co.uk

