

Stratford-Upon-Avon, Warwickshire, CV37



Price as listed



This pre-owned Lissett Bespoke (65'x22') park home is perfect for those looking for a detached, easy to maintain, bungalow-style property. The home has a modern kitchen and dining area with integrated appliances, a large living room with a vaulted ceiling and doors leading onto the wrap-around decking. The home has a master bedroom with an ensuite and walk-in wardrobe, two further bedrooms and a family bathroom. The home has a driveway that can fit 2 to 3 cars and a garden with a brick shed.

This residential development is a small, intimate park of just 26 homes. It is situated in the picturesque village of Welford-upon-Avon, just 4 miles from Stratford-upon-Avon. The centre of the village is a designated conservation area and one of the most desirable places to live in the UK. Stratford has cinemas, pubs, restaurants, banks, takeaways, and supermarkets. The closest cities are Coventry and Birmingham, which are 10 miles and 17 miles away.

Age restriction: Over 50s

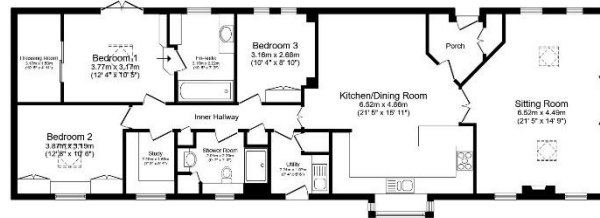
Pet friendly

Site fees (at time of listing): £234.94 per month

Residential license

Key Features

- Countryside Views
- Decking
- Over 50s
- Parking space
- Part Exchange Available
- Pet-Friendly
- Pre-owned park home
- Property is vacant
- Residential Development
- Wrap around garden



Total floor area 132.8 m² (1,430 sq.ft.) approx
This floor plan is for illustrative purposes only. It is not drawn to scale. Any measurements, floor areas (including any total floor area), openings and orientation are approximate. No details are guaranteed, they cannot be relied upon for any purpose and they do not form part of any agreement. No liability is taken for any error, omission or misstatement. A party must rely upon its own inspection(s). Powered by www.foolsgent.com



House to sell?
 Hassle-free Property Part-Exchange is available from Quickmove Properties, with no estate agent fees, no solicitor's fees and no market uncertainty.

CONTACT US

01793 840917

advice@quickmoveproperties.co.uk

