

# St Leonards, Dorset, BH24



Price as listed



This modern pre-owned (2021), luxury Stately Topaz (50'x22') park home is perfect for those looking for a detached, easy to maintain, bungalow style property. The home is on a generous plot and is in excellent condition. It features a modern kitchen with an island and a comfortable living room with large windows. There are two double bedrooms, an ensuite, a bathroom and a study. The exterior features a driveway with parking for 2 cars, an easy-to-maintain garden with artificial grass and raised beds, a storage shed and generous decked verandas to the front and side.

Set within beautifully landscaped grounds, this park is an elevated development with a welcoming community of like-minded residents. Residents enjoy a safe and peaceful lifestyle, with access to local amenities, award-winning beaches, and stunning Dorset countryside, close to the New Forest.

Age restriction: Over 45s

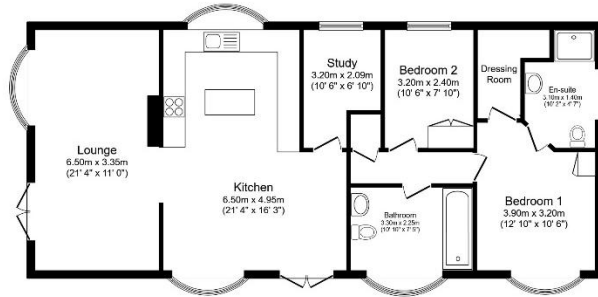
Pet friendly: Yes

Site fees: TBC

Residential license

## Key Features

- Exceptionally High Specification
- Garden space
- Modern design
- Outstanding Location
- Over 45s
- Part Exchange Available
- Pet-friendly
- Pre-owned park home
- Two Double Bedrooms
- Garden space



Total floor area 102.8 sq.m. (1,107 sq.ft.) approx

This floor plan is for illustrative purposes only. It is not drawn to scale. Any measurements, floor area (including any total floor area), openings and orientation are approximate. No details are guaranteed, they cannot be relied upon for any purpose and they do not form part of any agreement. No liability is taken for any error, omission or misstatement. A party must rely upon its own inspection(s). Powered by [www.floorplan.com](http://www.floorplan.com)



## House to sell?

Hassle-free Property Part-Exchange is available from Quickmove Properties, with no estate agent fees, no solicitor's fees and no market uncertainty.

## CONTACT US

01793 840917

[advice@quickmoveproperties.co.uk](mailto:advice@quickmoveproperties.co.uk)

**Quickmove**  
PROPERTIES

